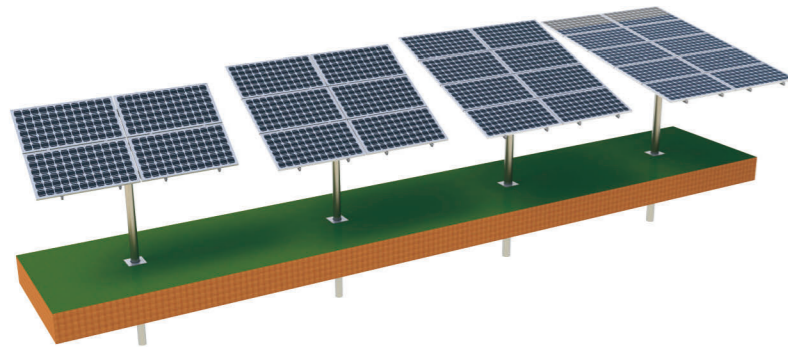


POLE MOUNTING SOLUTION

Hopergy Pole Mount is one optimized solution to mount 4, 6, 8 or 10 panels each pole with effective, flexible and durable single support post. Each pole system can be adjusted to five angles for being fixed at 10, 20, 30, 40 and 50 degree.

The Pole Mount is just the right application for mounting solar water pumping system in remote areas, as well as an alternative choice for residential open field, medium commercial solar project installation.



Technical Features:

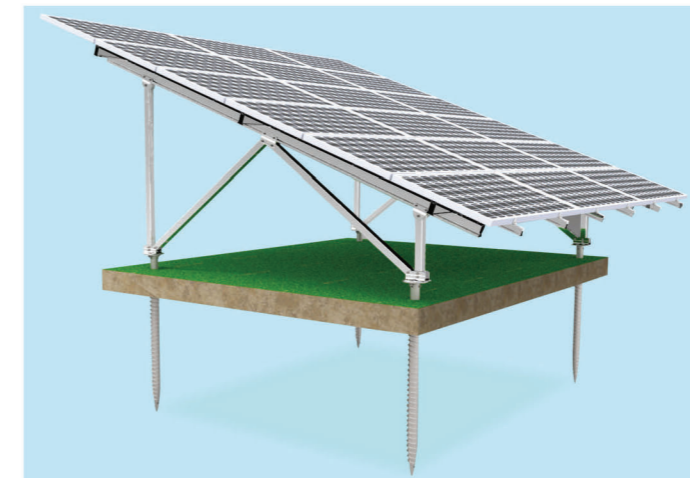
Standard: AS/NZS1170, Euro Code 8, DIN 1055, IBC 2006
Material: Anodized Aluminum 6005-T5 and SUS304 and Thick Hot-dip Galvanized Steel Q235
Snow Load: 1.4 KN/m²
Max Wind Speed: 55 m/s
Foundation Base: Concrete with Pre-buried Bolt
Warranty: 15 Years and 25 Years Service Life

Item No.	Description
HOP-PM-04	Pole Mount for 4pcs Panels
HOP-PM-06	Pole Mount for 6pcs Panels
HOP-PM-08	Pole Mount for 8pcs Panels
HOP-PM-10	Pole Mount for 10pcs Panels



Ground W Mounting Solution

Hopergy' s W-Shape ground mounting system uses top quality aluminum alloy with following features, stainless, non corrosive, windproof and anti-seismic. The appearance is artistic and the structure is safe. The system can be applied in large-size commercial and public photovoltaic power station. The products are past the strict inspection. The warranty period can be more than 25 years.



Technical Features:

Standard : AS/NZS1170, Euro Code 8, DIN 1055, IBC 2006 , JIS C8955/C8956-2011, GB50009-2012
Material: Anodized Aluminum6005-T5 and Hot-dip Galvanized Steel Q235
Preservative Treatment : Anodizing , Hot galvanizing
Snow Load : 1.4 KN/m²
Max Wind Speed: 55 m/s
Warranty: 10 Years and 25 Years Service Life

